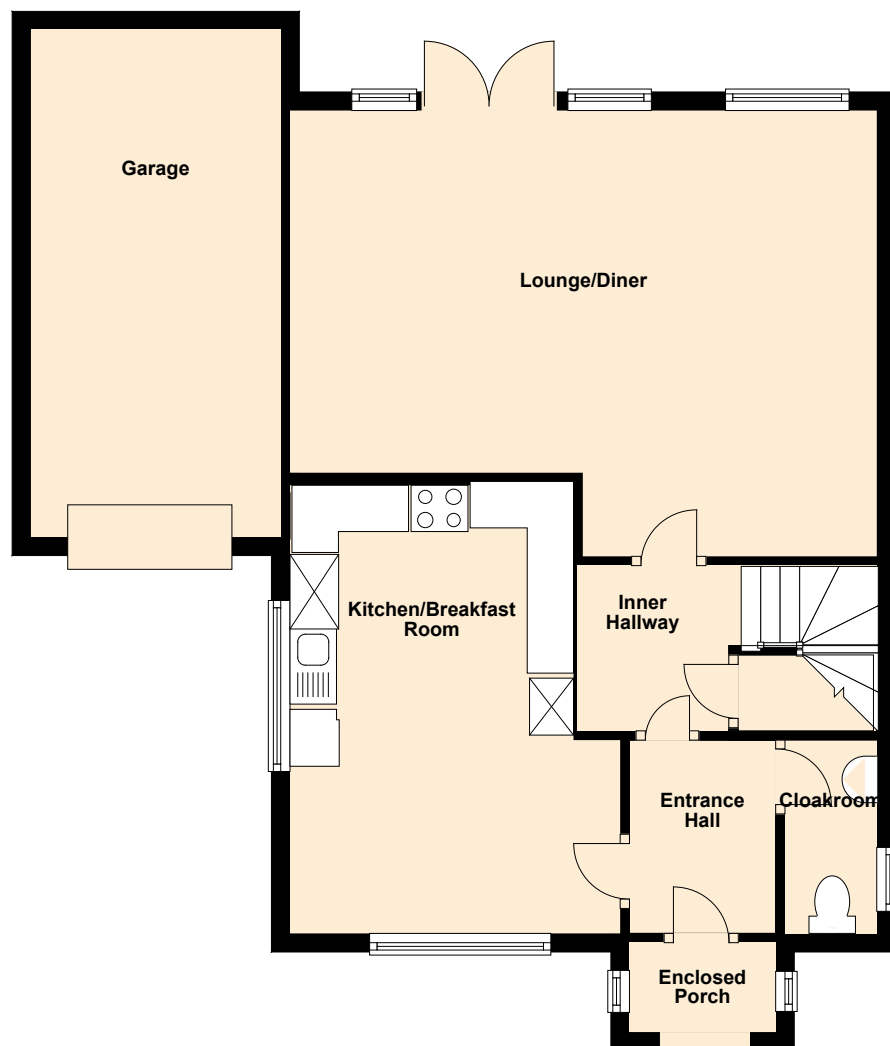


1 Trematon Farm Mews - POA | 4 bedroom detached home

A family home with a touch of luxury. This 4 bedroom detached property has been designed to accommodate modern living. It has a luxury fully fitted kitchen/breakfast room including oven and hob, dishwasher, fridge/freezer and washing machine, along with a beautifully fitted bathroom and ensuite to the master bedroom.

GROUND FLOOR



Kitchen / B'fast rm 15'9 (4.8m) x 11'10 (max) (3.6m max)

Lounge / Diner 21'0 (6.4m) x 15'5 (max) (4.7m max)

Note: All areas, dimensions and measurements shown are approximate and layouts shown are given as a guide only. They should not be relied on in any way.

FIRST FLOOR



Bedroom 1	12'2 (3.7m) x 11'10 (3.6m)
Bedroom 2	11'10 (3.6m) x 10'2 (3.1m)
Bedroom 3	11'2 (3.4m) x 8'6 (2.6m)
Bedroom 4	8'10 (2.7m) x 6'11 (2.1m)

Note: All areas, dimensions and measurements shown are approximate and layouts shown are given as a guide only. They should not be relied on in any way.